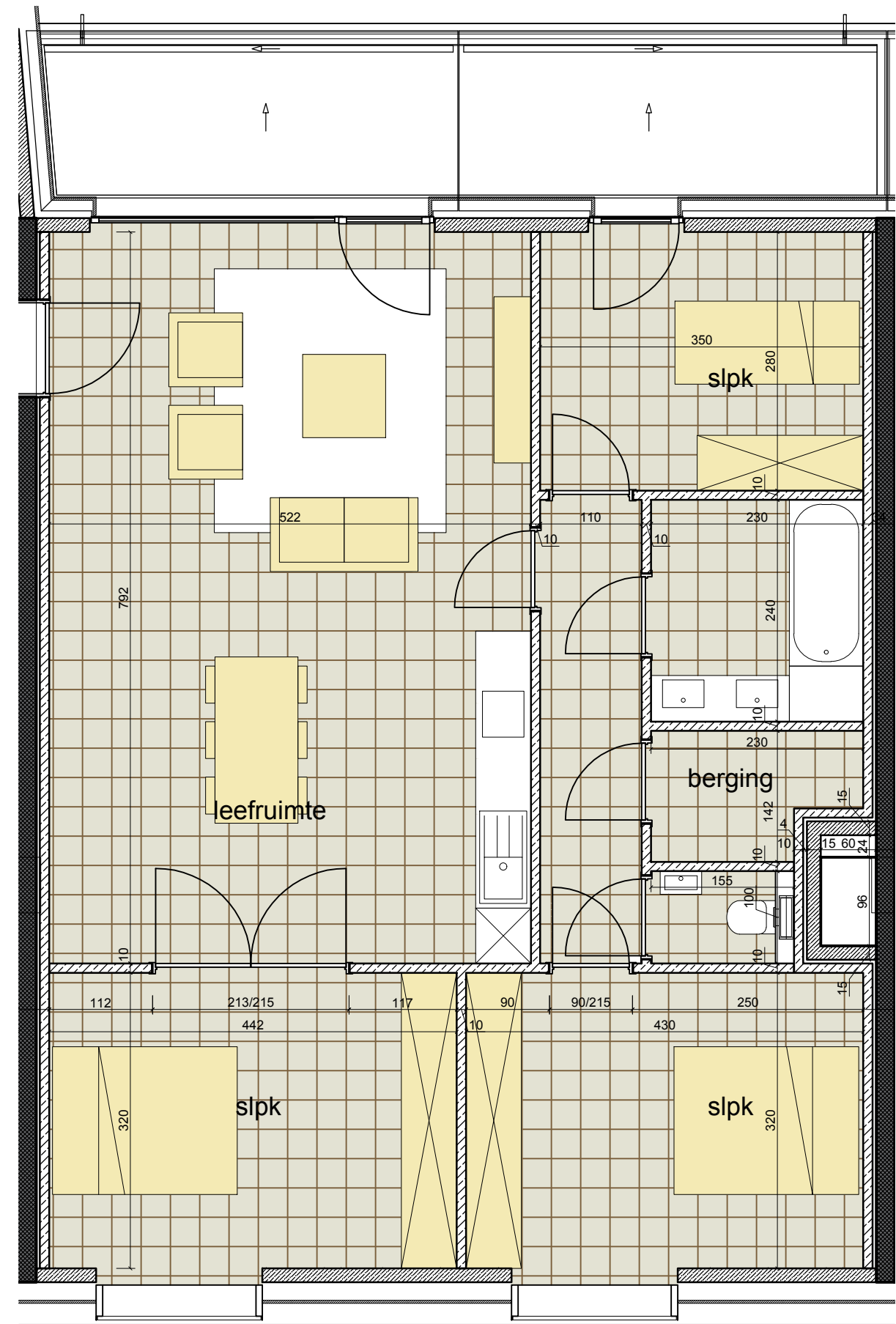
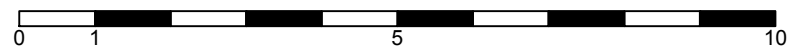
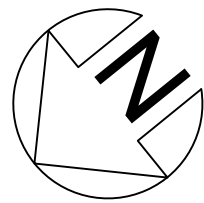


Appartement - 3 slaapkamers  
 Opp. app: 102.49 m<sup>2</sup>  
 Opp. terras: 14.5 m<sup>2</sup>  
 Opp. berging kelder: 5 m<sup>2</sup>



**JASPERS-EYERS ARCHITECTS**

www.jaspers-eyers.be  
 Tervuursevest 302 3000 Leuven T: +32 16 62 01 71  
 Rue Haute 130 1000 Brussel T: +32 2 514 04 96  
 Thuisaan 75 3600 Hasselt T: +32 11 32 21 63

Vander Elst Vastgoed nv.

Tiensevest 102 - 3000 Leuven

**Zeven Tuinen - blok X**

**APP 46d-0102 - verdieping +1**

plannr.: A1795 | 51 | X | A1 | CO | 46D | GP | 101 | 0102 | 00  
 omschrijving wijziging:

datum index : 2017 06 07	schaal : 1/60	fase : UV
getekend : DDV	nagezien : DDV	goedgekeurd : JE